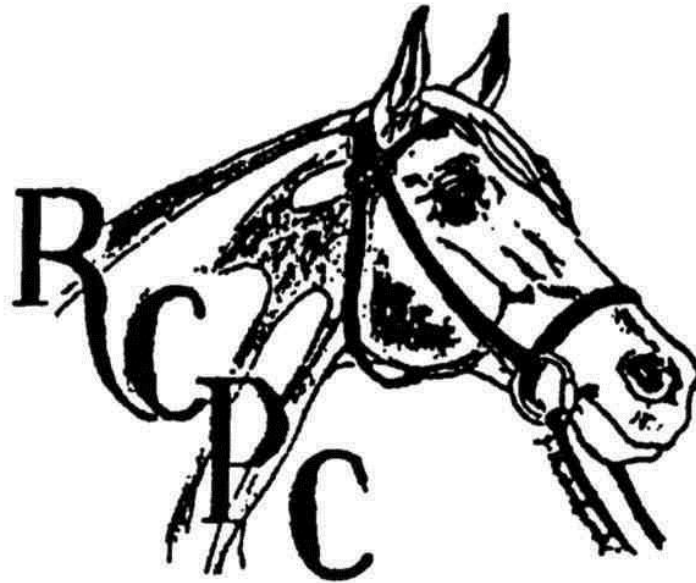


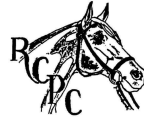
Racine County Pony Club



D1 Prep Guide

2016 Standard

The Racine County Pony Club produced this certification preparation guide. It is not an OFFICIAL USPC PUBLICATION; no guarantee of accuracy is warranted; USPC Review Committees have not approved the materials.



Name

I. Qualifications Sheet

RCPC Certification Procedures requires each member to demonstrate competency in all requirements of the rating level prior to a rating. Each member will be provided with a flowsheet, and all USPC Standards of Proficiency must be demonstrated at proficiency level as stated for the certification level and signed off. The completed flowsheets must be presented to the Certifications Coordinator on or before deadline dates. Although opportunities will be made available at each mounted meeting, it is the member that should initiate/take responsibility to organize these sign-offs for themselves. Bring your flow sheets to lessons and mounted clinics with Pony Club qualified instructors on a regular basis, to give you an ongoing idea of how you are doing.

II. Horse Management Expectations

This Prep outline is prepared to help you cover the Horse Management aspects of the D-1 Test. It is helpful for you to do this exercise because it not only gives you a great review format, it forces you to organize your thoughts and put them on paper. This reinforces the knowledge and helps you to verbalize your thoughts in the testing situation. Please practice verbalizing your answers. Show your guide to your instructors, DC, or anyone else with horse knowledge because they will add bits and pieces of their experience and aspects that you may not have considered.

III. Test your knowledge

These questions are based on knowledge discussed in the required reading. Use this section to test your knowledge. See if you can answer these questions without the book after you have completed the first two sections of this Prep Guide. We hope that this guide helps you in your study.

Best of Luck,

**Sally Pankonen
District Commissioner**

**Kind Kind-Bauer, Sara Fischer
Jt. District Commissioners**

**Sally Pankonen
RatingsCoordinator**

Racine County Pony Club



Name

Qualifications Sheet – 2016 Standard D-1 Certification

RIDING TEST EXPECTATIONS

Candidate should ride without lead line, demonstrating basic balanced position in an enclosed area at the halt and walk, and with control at the walk and trot.

RIDING ON THE FLAT

Requirement	Requirement Learned or Demonstrated Instructor Comments and Suggestions	Date	Signature
Mount & dismount, with assistance if necessary.			
Pick up and hold reins correctly at the halt.			
Shorten & lengthen reins correctly at the halt.			
Demonstrate basic correct position at the halt and walk.			
Ride at the walk & trot, with control, keeping mount on rail.			
Demonstrate simple change of direction at the walk and trot.			
Perform gradual transitions from walk to trot & walk to halt.			
Rider should demonstrate basic balanced position at the halt and walk.			
Drop and pick-up stirrups with feet While mounted at a halt			

RIDING OVER FENCES

Requirement	Requirement Learned or Demonstrated Instructor Comments and Suggestions	Date	Signature
Walk over poles on the ground in jumping position.			
Discuss with evaluator the reason for different positions when riding on the flat & over fences.			
Rider should ride over poles demonstrating basic balanced position.			

HORSE MANAGEMENT EXPECTATIONS

The candidate is a beginning-level horse manager, willing to learn the simple routines necessary for safe handling of quiet, well-trained horses. Knowledge will vary widely depending on age, educational level, and experience.

TURN-OUT

Requirement	Requirement Learned or Demonstrated Instructor Comments and Suggestions	Date	Signature
<p>Rider in safe & neat attire.</p> <p>Wear your Pony Club polo or any other shirt with a collar and sleeves.</p> <p>Wear riding breeches or jodhpurs, no chaps. If wearing jodhpurs, be sure to have knee garters or elastic under shoes. If you are wearing riding breeches, you should have high boots.</p> <p>Wear a properly fitted ASTM helmet.</p> <p>Wear appropriate boots – smooth sole with a heel.</p> <p>Wear your Pony Club Pin and medical armband.</p> <p>For girls: Your hair should be neatly pulled back in a hair net (no show bows), or braided.</p> <p>No extra jewelry. One pair of stud earrings is OK.</p>			

Mount neatly brushed			
Feet picked out (with assistance) & showing Farrier care.			
Tack safe & neat (properly adjusted with assistance if necessary).			

CONDITIONING

Requirement	Requirement Learned or Demonstrated Instructor Comments and Suggestions	Date	Signature
Know one reason for cooling out mount after exercise.			

NUTRITION

Requirement	Requirement Learned or Demonstrated Instructor Comments and Suggestions	Date	Signature
Know how to give water to mount safely.			
Know how to give grain to mount safely.			
Know how to give hay to mount safely.			
Know how to give a tidbit to mount safely.			

STABLE MANAGEMENT

Requirement	Requirement Learned or Demonstrated Instructor Comments and Suggestions	Date	Signature
Groom mount with brush & currycomb, with assistance.			
Pick out feet, with assistance.			
Tack up mount, with assistance.			
Untack mount, with assistance.			
Name 10 parts of saddle and bridle (any)			
Know two reasons for cleaning tack.			

PONY PARTS, CONFORMATION & LAMENESS

Requirement	Requirement Learned or Demonstrated Instructor Comments and Suggestions	Date	Signature
Name any 10 parts of the pony (such as mane, tail, leg, etc.)			
Know color and breed of own mount			

TRAVEL SAFETY

Requirement	Requirement Learned or Demonstrated Instructor Comments and Suggestions	Date	Signature
Know basic rules of safe riding in a group, in an enclosed area.			

RECORD BOOK

Requirement	Requirement Learned or Demonstrated Instructor Comments and Suggestions	Date	Signature
Bring stall card for own mount			

HEALTH CARE VETERINARIAN

Requirement	Requirement Learned or Demonstrated Instructor Comments and Suggestions	Date	Signature
Discuss what a veterinarian is.			
Give one reason why the veterinarian might treat your mount			

TEACHING

Requirement	Requirement Learned or Demonstrated Instructor Comments and Suggestions	Date	Signature
Not applicable.			

LAND CONSERVATION

Requirement	Requirement Learned or Demonstrated Instructor Comments and Suggestions	Date	Signature
Verbally list three different places in your area where you see horse activities taking place. Include where you have your Pony Club mounted meetings.			

LEADING & LONGEING

Requirement	Requirement Learned or Demonstrated Instructor Comments and Suggestions	Date	Signature
Approach mount safely			
Put Halter on Safely			
Lead & turn correctly & safely.			

FOOT & SHOEING

Requirement	Requirement Learned or Demonstrated Instructor Comments and Suggestions	Date	Signature
Give one reason to pick out feet.			
Tell whether your mount wears shoes or not			

VOLUNTEERISM (Pony Club Horsemaster Only)

Requirement	Requirement Learned or Demonstrated Instructor Comments and Suggestions	Date	Signature
Discuss what being part of a volunteer organization means to you.			
Explain two ways you might be able to volunteer for the club/center you belong to			

Safety

Requirement	Requirement Learned or Demonstrated Instructor Comments and Suggestions	Date	Signature
Name two pieces of clothing or equipment that you should wear, for your safety, when you ride.			

HORSE MANAGEMENT EXPECTATIONS

The candidate is a beginning-level horse manager, willing to learn the simple routine necessary for safe handling of quiet, well-trained horses. His or her knowledge will vary widely depending on age, educational level, and experience.

TURN OUT

List the requirements of safe riding attire.

Shirt?

Pants?

Helmet?

Boots?

Jewelry?

Hair?

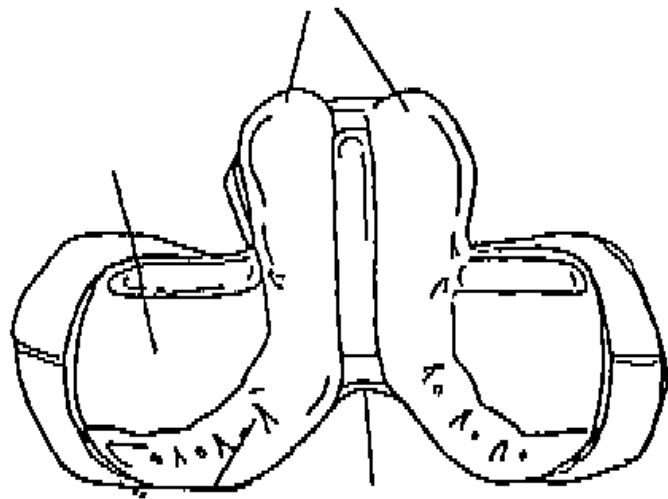
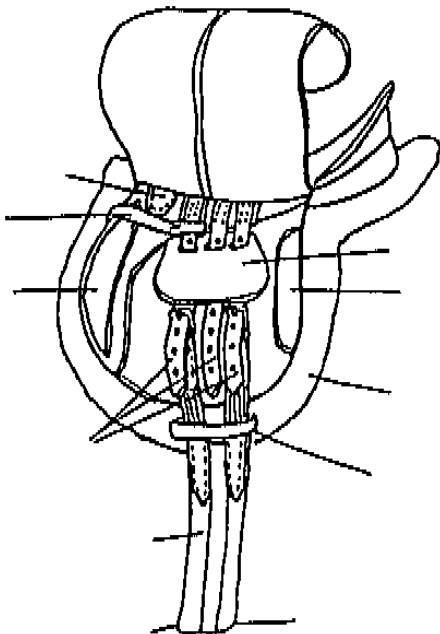
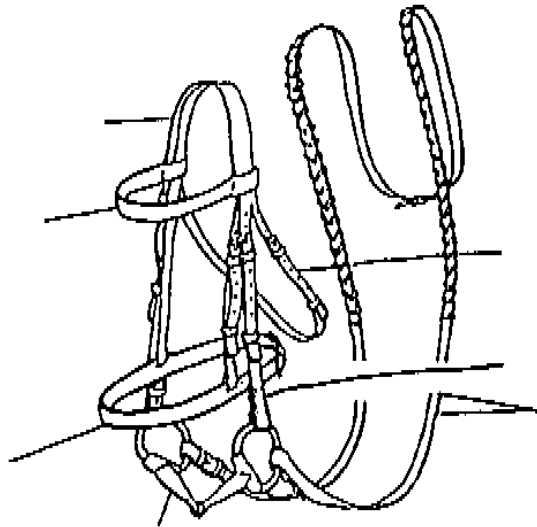
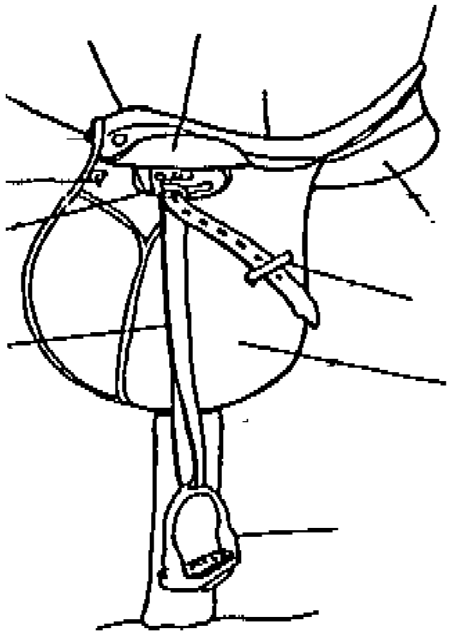
Describe your tack cleaning procedures.

Know two reasons for cleaning tack

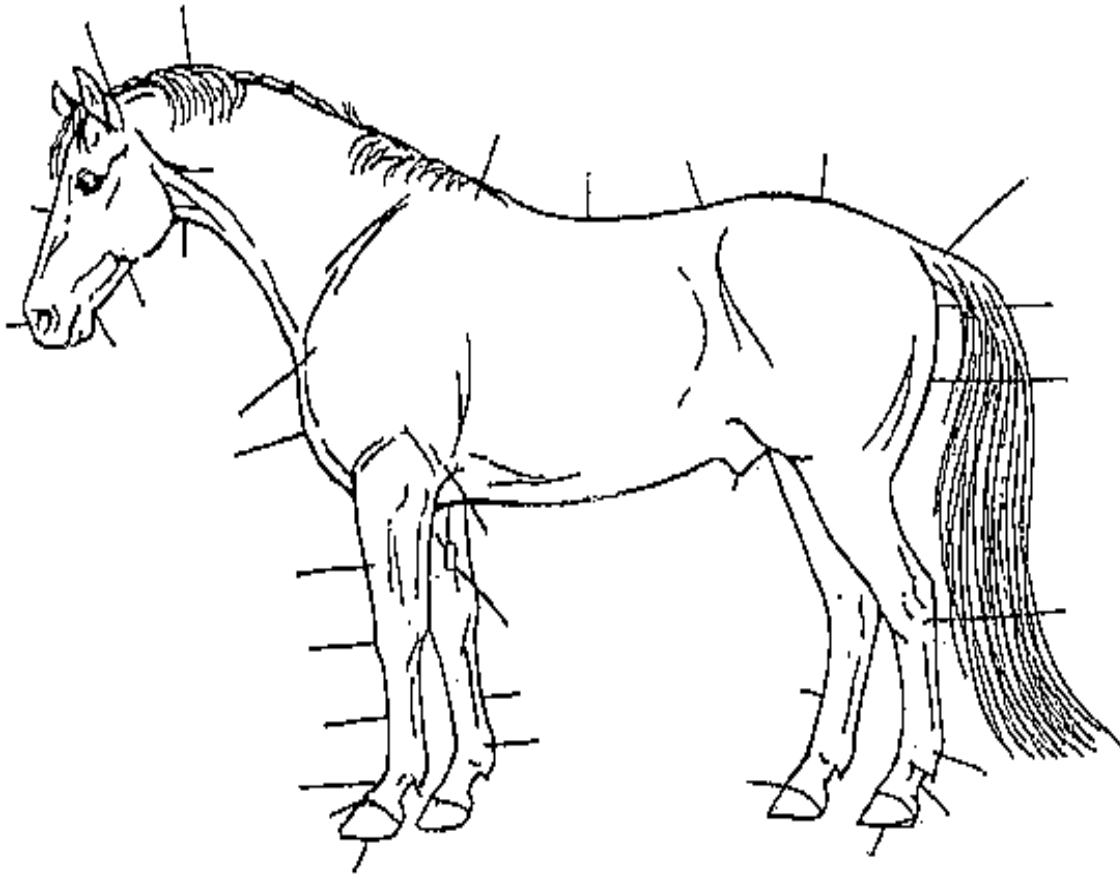
a.

b.

Label the parts of the Saddle and Bridle:



Label at least 10 Parts of the Pony:



List some Do & DON'T notes for yourself on the following demonstration areas:

Groom with brush and currycomb.

Pick out feet (with assistance if necessary).

Give one reason to pick out feet.

Tack up and untack pony (with assistance if necessary).
Describe each step you do to tack up your horse.

Describe each step you do to do untack your horse.

LEADING/CONDITIONING/ NUTRITION

Describe how to Approach pony safely and put on halter.

Describe how to Lead & turn correctly and safely.

What side of the pony should you be on?

Where should your hands be?

How should you hold the lead rope?

How do you turn your pony?

Write down one reason for cooling out pony after exercise.

Explain how to give water, grain, hay & tidbit to pony safely.

Water:

Grain:

Hay:

Tidbit:

HEALTH CARE / VETERINARIAN

Describe who a veterinarian is.

Give one reason why the vet might treat your pony.

ROAD AND TRAVEL SAFETY

Know basic rules of safe riding in a group, in an enclosed area.

RECORD BOOK

Fill out stall card for your own mount.

LAND CONSERVATION

List three different places in your area where you see horse activities taking place. Include where you have your Pony Club mounted meetings.

1.

2.

3.

D1 Worksheet #1

(Turn Out)

DIRECTIONS: Look up the answers in the manual & circle the best answer.

Reference: (a) USPC Manual of Horsemanship D Level, (b) and Rules for Rallies & Horse management Handbook, (c)USPC Standards of Proficiency - D Standard.

1. It is important to cool your pony out after exercise because if you don't he might not like you **or** might get sick.
2. When riding, you should always wear your Pony Club sweatshirt **or** hard hat and boots.
3. At turn out inspection you should stand on the near side, facing the pony's shoulder **or** rear.
4. At turn out inspection you should hold your reins in the right **or** left hand, with the slack in your right **or** left hand.
5. When presenting a pony for inspection you do **or** do not change sides with the examiner.
6. A riding coat (other than solid black), plain color shirt, choker, necktie or turtleneck, breeches (or jodhpurs of any color) and appropriate boots describe formal **or** informal attire.
7. For inspection you should have your girth tight **or** loose.
8. At 'D' Pony Club ratings, braiding is required **or** not allowed.
9. Be sure your saddle pad is **or** is not pulled up into the front arch of your saddle.
10. To go to inspection, be sure your stirrups are **or** are not run up.

“ A horse is worth more than riches”

Spanish proverb

D1 Worksheet #2

(Mount & Dismount)

DIRECTIONS: Look up the answers in the manual & circle the best answer.
Reference: USPC Manual of Horsemanship D Level

1. Before mounting be sure that the girth is secure **or** on, that the stirrups are down **or** up, and that the stirrup leathers are about the correct length **or** extra long.
2. Mount from the near **or** off side facing the rear **or** head of the pony.
3. Hold your whip and reins **or** spurs and martingale in the left hand in front of the croup **or** withers.
4. Sink gently in to the saddle without a bump **or** stirrup.
5. To dismount, remove both feet **or** the right foot from the stirrups.
6. To dismount, put your left hand on the pony's croup **or** neck (in front of the withers).
7. The extra loop of rein where the buckle is, is called the bight **or** crown.
8. When mounting never put your hand on the back **or** front of the saddle.
9. When dismounting, place both reins in your right **or** left hand.
10. After dismounting leave your stirrups down and tighten the girth **or** run both stirrups up and loosen the girth,

D1 Worksheet #3

(Basic Position)

DIRECTIONS: Look up the answers in the manual & circle the best answer.
Reference: USPC Manual of Horsemanship D Level

1. Your stirrups should be on the instep or ball of your foot.
2. Your heels should be up or down.
3. Sit on your buttock or seat bones in the center of the saddle.
4. Seen from the side there should be a straight line passing through the rider's shoulder, hip & heel or nose, hand & toe.
5. The rider's head should be down or up and looking between the pony's legs or ears.
6. There should be a straight line from the bit to the rider's nose or elbow.
7. When holding the reins your thumbs or knuckles should be on top.
8. When mounted your legs should lie firmly or gently against the pony's sides.
9. Your reins should be long enough to place your hands on your pony's wither or croup with your elbows bent.
10. A good riding position makes it easy for you to stay on your pony and is comfortable for your pony. I or E

“It takes courage to push yourself to places that you’ve never been before...to test your limits...to break through barriers.”

D1 Worksheet #4

(The Aids & Changes of Direction)

DIRECTIONS: Look up the answers in the manual & circle the best answer.
Reference: USPC Manual of Horsemanship D Level

1. To ride at the walk, your head **or** hands must move forward to follow the pony's head.
2. When asking your pony to halt, your hand should stay squeezing **or** relax when he stops.
3. Squeeze with one **or** both legs to move your pony forward.
4. To make a turn keep your eyes looking between your pony's ears **or** look in the direction you want to go.
5. When turning move your outside leg back a little to control his hindquarters **or** shoulders.
6. When turning your inside **or** outside leg keeps the pony moving forward.
7. The aids for trot are the same **or** different than for the walk.
8. Your pony can **or** cannot feel your seat through the saddle.
9. Your voice is used instead of **or** to help the other aids.
10. When turning your inside **or** outside hand moves sideways to lead the pony through the turn.

D1 Worksheet # 5

(Jump Position & Transitions)

DIRECTIONS: Look up the answers in the manual & circle the best answer.
Reference: USPC Manual of Horsemanship D Level

1. Circle the appropriate times to use the half-seat:
riding down hills riding up hills posting trot sitting trot
jumping
2. Posting the trot is easier **or** harder on you and your pony.
3. A transition is a change in direction **or** gait.
4. Going from a walk to a trot is an example of an upward **or** downward transition.
5. When asking your pony to halt you should relax **or** close your legs on the pony's sides.
6. In the jump position the rider should always look ahead **or** down.
7. When approaching a ground pole, keep your eyes focused at the center of the pole. T **or** F
8. It is easier **or** harder for your pony to pick his feet up properly when riding over a ground pole if you are in half-seat.
9. When in the half-seat your knees, ankles and hips **or** knees, ankles and wrists take up the bounces.
10. If you have trouble balancing hold the reins tighter. T **or** F

D1 Worksheet # 6

(Approach, Halter, Lead & Turn)

DIRECTIONS: Look up the answers in the manual & circle the best answer.
Reference: USPC Manual of Horsemanship D Level

1. You should always approach your pony at his head **or** shoulder.
2. Ponies are blind behind his rump and right in front of his nose. I
or E
3. You should always talk **or** shout to your pony when approaching him.
4. Never wrap the lead rope around your hand or body. I **or** E
5. Always walk beside **or** in front of your pony when leading him.
6. Always turn the pony toward **or** away from you when leading.
7. To halter a pony stand by his left **or** right shoulder, facing his head
or tail.
8. Put the lead line over your shoulder **or** around the pony's neck to keep him still.
9. When putting a halter on slip the noseband **or** crownpiece onto his nose, then pass the noseband **or** crownpiece over his poll and buckle behind his ears.
10. It is okay **or** not okay to lead your pony by the halter for just a short distance.

“Together everyone achieves more.”

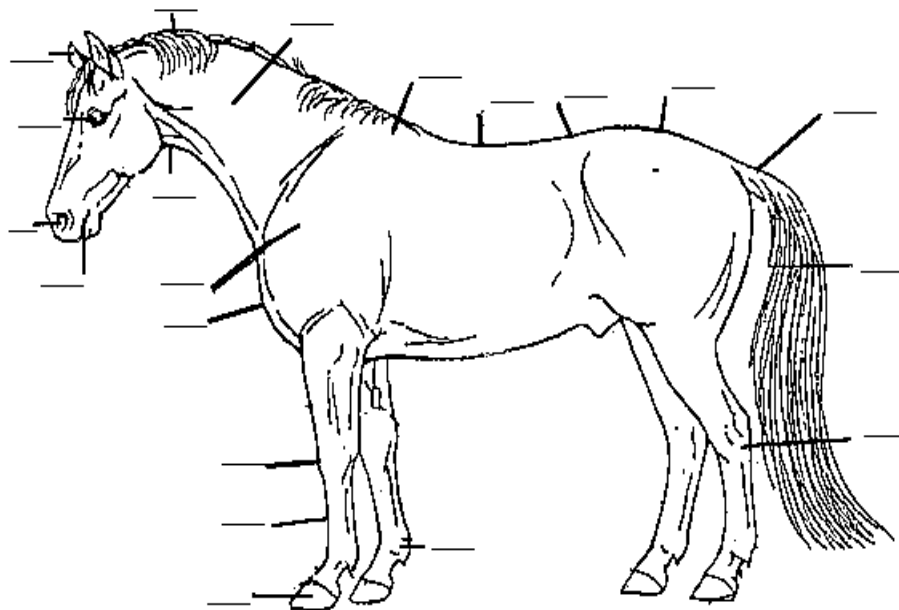
D1 Worksheet #7

(Points of the Horse)

DIRECTIONS: Look up the answers in the manual & circle the best answer.
Reference: USPC Manual of Horsemanship D Level

Place the letter of the body part in the correct place on the picture. A D1 needs to be able to verbally point out 10 parts of the pony.

- | | | | |
|-----------|-------------|------------|------------|
| a. wither | f. shoulder | k. nostril | p. fetlock |
| b. ear | g. eye | l. dock | q. croup |
| c. mouth | h. knee | m. loin | r. tail |
| d. back | i. hoof | n. neck | s. mane |
| e. throat | j. hock | o. cannon | t. chest |



“There is no secret so close as that between a rider & his horse”

Robert Smith Surtees

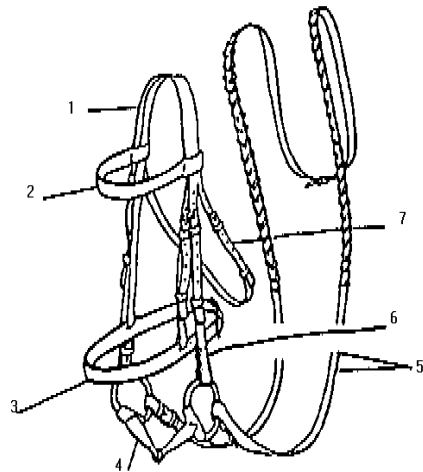
D1 Worksheet # 8

(Parts of the Saddle & Bridle)

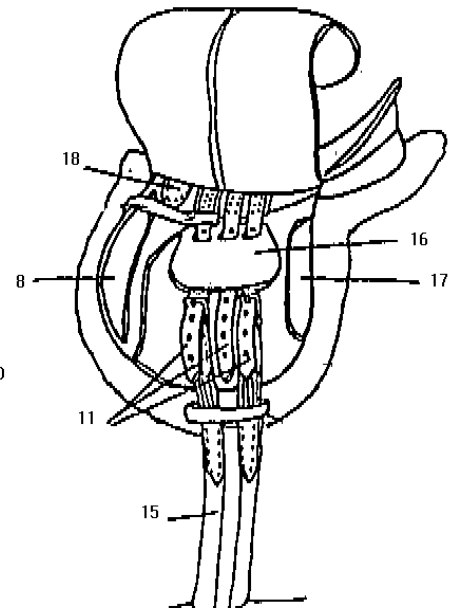
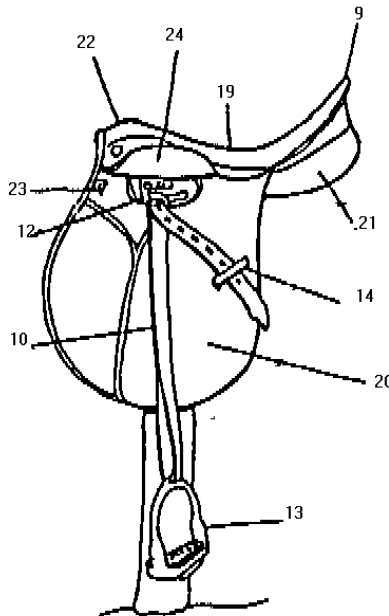
DIRECTIONS: Look up the answers in the manual & circle the best answer.
Reference: USPC Manual of Horsemanship D Level (page 248-249)

Match the name of at least 10 parts of the saddle & bridle by placing the number in front of the name:

- _____ crownpiece
- _____ browband
- _____ noseband
- _____ bit
- _____ cheekpiece
- _____ throatlatch
- _____ reins



- _____ cantle
- _____ seat
- _____ pommel
- _____ skirt
- _____ D ring
- _____ stirrup bar
- _____ stirrup leather
- _____ stirrup iron
- _____ keeper
- _____ saddle flap
- _____ rear panel
- _____ buckle guard
- _____ point pocket
- _____ knee roll
- _____ billets
- _____ girth



D1 Worksheet #9

(Grooming, tacking up & picking out the feet)

DIRECTIONS: Look up the answers in the manual & circle the best answer.
Reference: USPC Manual of Horsemanship D Level

1. Circle 4 things you should have in your grooming kit:

hoof pick ice pick currycomb twinkies fly wipe hoof oil

sponge dandy brush gum body brush hairspray mane comb
2. When grooming your pony start at the tail **or** poll.
3. The steel curry comb is used to clean the pony **or** the brushes.
4. When picking out the feet always use the pick from heel to toe **or** toe to heel.
5. Use the same **or** a different sponge to clean the dock after cleaning around the eyes, lips and muzzle.
6. Never use the curry comb on the face **or** shoulder.
7. As a D1 you can **or** cannot have help to tack and untack a pony.
8. A pony should always **or** never be tied by his bridle
9. When tacking your pony the first thing to put on him is the saddle **or** bridle.
10. Before you put the bridle on make sure the noseband and throatlatch are buckled **or** unbuckled.

“A Canter is cure for every evil” Benjamin Disraeli

D1 Worksheet # 10

(Feeding & Tack Cleaning)

DIRECTIONS: Look up the answers in the manual & circle the best answer.
Reference: USPC Manual of Horsemanship D Level

1. Circle the materials needed to clean your tack.
saddle soap nail sponge dandy brush hoof pick
metal polish curry comb feather duster hook water
bucket book hair spray saddle rack clean rags
conditioner telephone
2. Use a dandy brush **or** sponge to clean off dirt & grease.
3. Dirt, sweat and dust make leather rough and dry **or** moist and slippery.
4. When cleaning your tack keep the sponge as dry **or** wet as possible.
5. If the soap lathers it is too dry **or** wet.
6. Circle 3 reasons for cleaning your tack:
prevents drying and cracking of leather
to make it look more expensive
to check for damage
makes it last for many years
7. Circle the places hay can be fed:
feeder manger on clean sand haynet on clean dirt
8. Feed grain in a feeder **or** on the ground.
9. Water should be available at all times **or** at certain times.
10. Feed a tidbit with your hand in a fist **or** flat.